
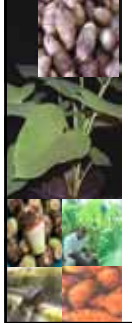





Towards a Global Taro Genetic Resources Conservation Strategy


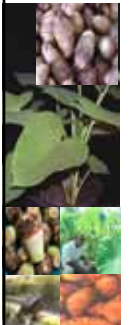
Ramanatha Rao, Luigi Guarino, Mary Taylor,
Danny Hunter and Grahame Jackson

Announcement:
 With effect from 1 December 2006, IPGRI will change its name to *Bioversity International*. The name echoes our new strategy which focuses on improving people's lives through biodiversity research.

Introduction

- ❖ Taro (*Colocasia esculenta* (L.) Schott) is a vegetatively propagated crop with edible tubers and leaves
- ❖ Great importance in the Pacific Islands and Africa
- ❖ Special cultural, dietary and economic importance
- ❖ Ranks fourteenth among staple vegetable crops
- ❖ Global production: 10.5 million tonnes (FAO 2005)

Conservation of Taro Genetic Resources

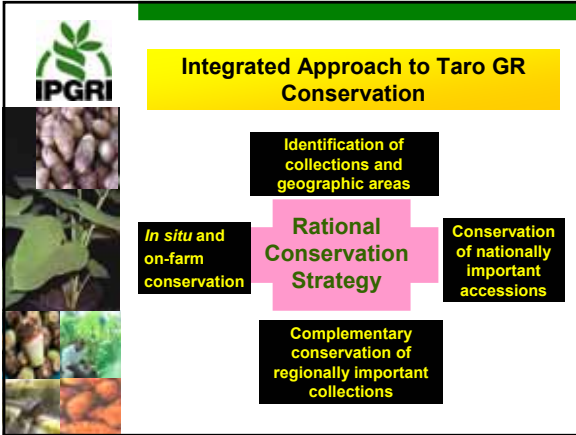
- ❖ Narrow genetic diversity
- ❖ Difficult crop to conserve *ex situ*, especially in field genebanks
- ❖ Occasional seed production in some locations has been observed – Complementary seed conservation




Recent International Meetings

- ❖ 2 major taro meetings were organized

1. Global Perspectives on Taro genetic Resources: Genetic Diversity, Adaptation and Uses 13-14th Sept 2000, Japan
2. 3rd International Taro Symposium May 2003, Fiji



IPGRI

Significant Collections of Taro GR

Pacific Islands

Country	1986	1994
PNG	307	521
Solomon Islands	31	2
Vanuatu	138	0
New Caledonia	?	86
Fiji	72	78
Niue	52	0
Samoa	20	17
Tonga	14	21
Cook Islands	57	0
Total	691	725

IPGRI

Significant Collections of Taro GR (cont.)

Southeast Asia and Oceania

Taro Network for Southeast Asia and Oceania (TANSOA)

Country	# Accessions
Philippines	172
Vietnam	350
Thailand	300
Malaysia	135
Indonesia	685
PNG	278
Vanuatu	260
Total	2180

IPGRI

Significant Collections of Taro GR (cont.)

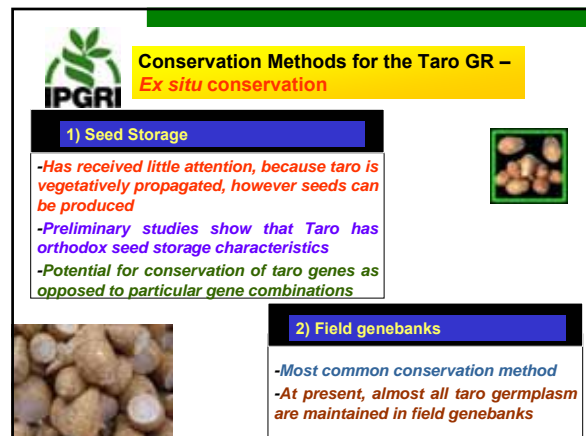
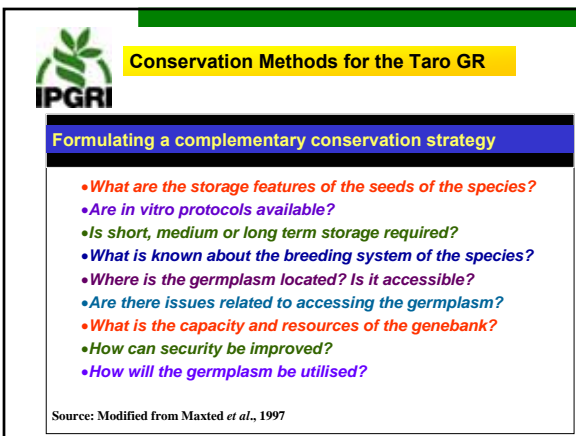
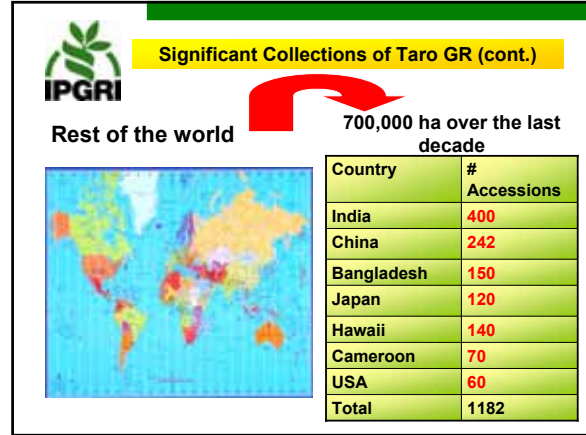
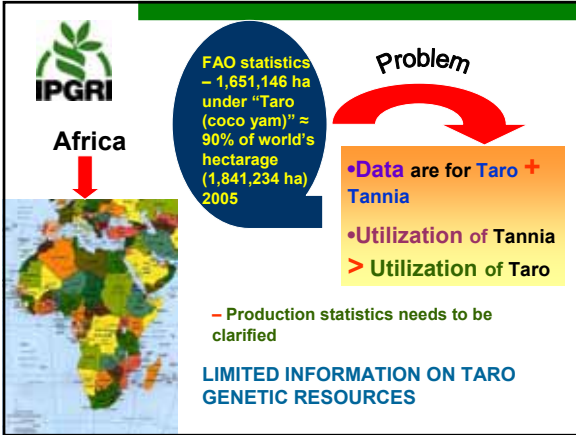
Other countries

Vietnam

Germplasm Type	# Accessions
Cultivated	329
Wild	3
Feral	18
Total	350

Cuba

Germplasm Type	# Accessions
Local collection	21
Introduced	15
Selection	6
Unknown origin	3
Total	45




IPGRI

Conservation Methods for the Taro GR – Ex situ conservation (cont.)

3) In vitro methods

-Advantage of security, ease of distribution and the ability to conserve pathogen-tested and cleaned materials



4) Slow growth method

-Provides a medium term storage option

5) Cryopreservation

-Recovery rates between 80 to 100% have been reported for taro after vitrification



IPGRI

Conservation Methods for the Taro GR – In situ conservation

1) Biosphere reserves/protected areas


-Wild taro been reported in Australia, PNG, the Solomon Islands, Vanuatu & SEA
Not been studied thoroughly
-Breeders avoid wild taros because of negative traits
-However wild genotypes are important future source of genes

2) On Farm conservation

-An important consideration in an overall complementary strategy
-Potential in the Pacific where diversity of landraces is high

3) Home gardens


-Taro one of the most dominant plants found in home gardens in PNG, Fiji and Tonga.
- Could provide immediate nutritional, economical and social benefits



IPGRI


Use of Taro Genetic Resources

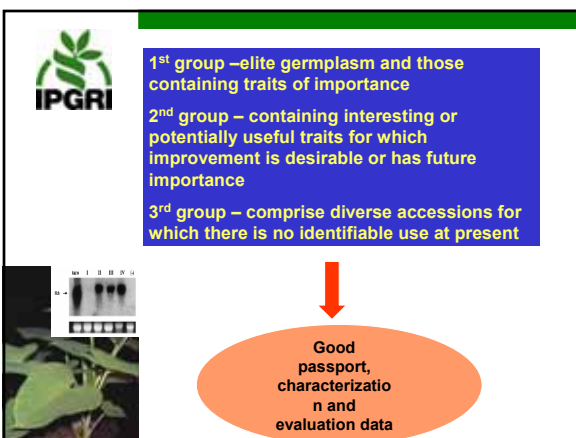
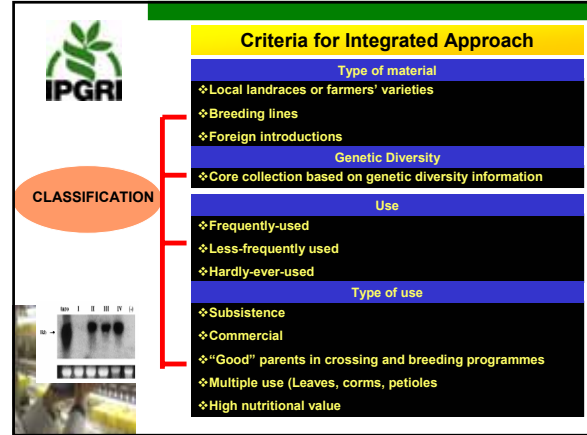
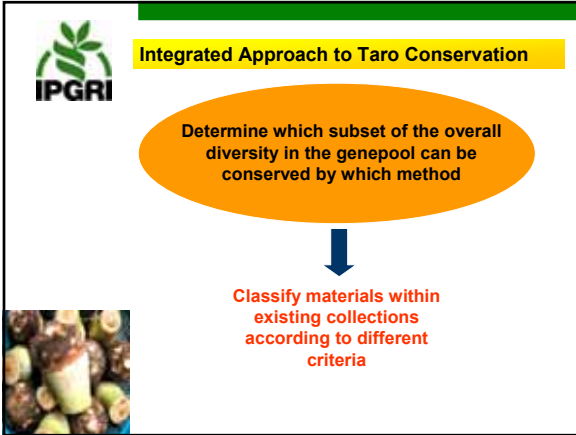
- 1) Used in breeding programmes for taro blight resistance in Samoa and PNG – hybridization between 2 main gene pools identified by biochemical and molecular markers
- 2) Commercial taros have been improved for characters as resistance to leaf blights and aphids, increasing vigour and yield and taste
- 3) Triploid selections have been released and diploid hybrids are being evaluated.
- 4) Artificial production of triploids



IPGRI

How can different conservation methods be combined to complement each other to conserve and utilize taro genetic diversity effectively and efficiently?







Bioversity International
Improving lives through biodiversity research



THANK YOU!